



Your Partner in Progress



DOUBLE 
DIAMOND



VISION

To rise to the level of a world class service provider, reach greater heights to be a step above the competition and leave a trend for others to follow.



MISSION

To optimize customers satisfaction level with quality product and service.



QUALITY

Continuously improving product quality, customer satisfaction, minimum wastage, maximum resource utilization.



VALUES

Honesty, integrity, innovation, reliability, dependability



Product Customization

Inhouse mold manufacturing facility allows us to develop customized products



Manufacturer

Manufacturer of various range of disposable & rotatable products



Vast Experience

Management has vast experience of 30+ years of serving travel & hospitality industry



Excellent Connectivity

Excellent and convenient mix of sea, air and land connectivity



Project Solution

Project solution under one roof for travel, hotels, catering & institutions



Assured Quality

Inhouse stringent quality team



Designing

Customized product artwork / designs offered as per client requirement.

Suvjay Industries India LLP (SII):

Suvjay Industries India LLP (SII) is part of Al Salem Group based in United Arab Emirates since 1988. At SII, we're global specialists in wide range of sustainable disposable packaging materials, PLA & LDPE Extrusion Coated Paper/ Cupstock Board and multilayer blown film & liners upto 1.7 m width dedicated to making every customer & consumer experience enjoyable, consistent, and safe. Our quality products are well-known under our brand name "Double Diamond".

With 3,10,000 Sq. Ft. of all under one roof World Class manufacturing set-up, over 400 dedicated employees, 80+ state of the art automized machines producing a range of about 200+ products and a worldwide supply chain, today, we are a leading supplier of Paper/ Film/ Foil/ fabric & plastic/ compostable plastic-based disposable products for consumers and PLA/ PE coated industrial laminates/ films for quality conscious converters.

With a unique set of manufacturing capabilities and an experienced team, we can provide high performance products and outstanding service at competitive costs. SII is one of the only unique facilities in the world that has dedicated plants for both PLA & PE coating as well as Compostable Bioplastic & plastic Blown films under one roof.

SII also has a heavy emphasis on product development and technical support. Our mission is to offer innovative products and solutions that have a positive impact on our customers and their environment.



Here is a list of some of our major Machines and their capabilities:

- 1.25 m PLA Extrusion Coating/ Lamination Plant
- 1.25 m LDPE Extrusion Coating/ Lamination Plant
- 1.15 m multilayer Blown film Extrusion Plant
- 1.7 m multilayer Blown film Extrusion Plant
- 0.75 m High output Co-extrusion PP/ PET Sheet Extrusion Plant
- Various Fully automized Thermoforming Plants
- Many Aluminium Foil forming in different shapes/ sizes & housefoil conversion Plants
- Paper Tissues/ Cups/ Fans/ Bags/ Straws/ Cutlery conversion plants
- Multicolor Printing, Sheet cutting, slitting, shrink & stretch packing equipments

Driven by excellence, we believe in building long-term relationships with all our customers. As an industry leader with tremendous experience and expertise in global sourcing, we offer many advantages such as:

- Quick Product Availability
- High Adaptability
- World-Class Products
- Smart Product Construction
- Operational Efficiency



Reduce Plastic Waste



Lightweight



Recyclable



Organic/Bio



Biodegradable



Eco-Friendly



Compostable



ECO Friendly



PLASTIC FREE

Aluminium Foil Container

Double diamond range of aluminum foil containers are food grade and hygienic. They are produced under strict international Food packaging standards such as FSSC 22000, offered in ECO, regular premium, special range.



Product	: 100 ml
Curling	: Full Curling
Packing	: 100 x 10
Pieces / Case	: 1000
Carton Size	: 400 x 215 x 275 mm

← Top Out (mm) 93 x 68 →	
← Top In (mm) 85 x 60 →	
100 ml	↑ 26 mm ↓
← Bottom (mm) 70 x 45 →	



Product	: 120 ml
Curling	: Half Curling
Packing	: 100 x 50
Pieces / Case	: 5000
Carton Size	: 485 x 462 x 435 mm

← Top Out (mm) 77.5 x 77.5 →	
← Top In (mm) 72.5 x 72.5 →	
120 ml	↑ 35.5 mm ↓
← Bottom (mm) 51 x 51 →	



Product	: 150 ml
Curling	: Full Curling
Packing	: 100 x 60
Pieces / Case	: 6000
Carton Size	: 620 x 265 x 455 mm

← Top Out (mm) 100 x 86 →	
← Top In (mm) 94 x 80 →	
150 ml	↑ 30 mm ↓
← Bottom (mm) 77 x 67 →	



Product	: 200 ml
Curling	: Full Curling
Packing	: 100 x 40
Pieces / Case	: 4000
Carton Size	: 527 x 475 x 520 mm

← Top Out (mm) 120 x 95 →	
← Top In (mm) 115 x 90 →	
200 ml	↑ 25 mm ↓
← Bottom (mm) 98 x 73 →	



Product	: 210 ml
Curling	: Half Curling
Packing	: 100 x 20
Pieces / Case	: 2000
Carton Size	: 525 x 450 x 265 mm

← Top Out (mm) 115 x 88 →	
← Top In (mm) 107 x 80 →	
210 ml	↑ 35 mm ↓
← Bottom (mm) 85 x 56 →	



Product	: 250 ml
Curling	: Half Curling
Packing	: 100 x 20
Pieces / Case	: 2000
Carton Size	: 525 x 450 x 265 mm

← Top Out (mm) 122 x 94 →	
← Top In (mm) 112 x 84 →	
250 ml	↑ 40 mm ↓
← Bottom (mm) 90 x 64 →	



Product	: 300 ml
Curling	: Full Curling
Packing	: 100 x 20
Pieces / Case	: 2000
Carton Size	: 510 x 490 x 330 mm

← Top Out (mm) 153 x 96 →	
← Top In (mm) 148 x 91 →	
300 ml	↑ 25 mm ↓
← Bottom (mm) 133 x 73 →	



Product	: 450 ml
Curling	: Half Curling
Packing	: 100 x 15
Pieces / Case	: 1500
Carton Size	: 620 x 265 x 455 mm

← Top Out (mm) 140 x 115 →	
← Top In (mm) 128 x 103 →	
450 ml	↑ 48 mm ↓
← Bottom (mm) 105 x 80 →	



Product	: 600 ml
Curling	: Half Curling
Packing	: 100 x 10
Pieces / Case	: 1000
Carton Size	: 650 x 285 x 380 mm

← Top Out (mm) 180 x 120 →	
← Top In (mm) 172 x 112 →	
600 ml	↑ 47 mm ↓
← Bottom (mm) 152 x 92 →	

Aluminium Foil Container



Product : 660 ml
Curling : Half Curling
Packing : 100 x 10
Pieces / Case : 1000
Carton Size : 570 x 270 x 410 mm

Top Out (mm) 193 x 107
 Top In (mm) 183 x 97
 660 ml
 54 mm
 Bottom (mm) 150 x 67



Product : 680 ml
Curling : Full Curling
Packing : 100 x 10
Pieces / Case : 1000
Carton Size : 860 x 275 x 400 mm

Top Out (mm) 187 x 162
 Top In (mm) 177 x 152
 680 ml
 31 mm
 Bottom (mm) 157 x 132



Product : 750 ml
Curling : Half Curling
Packing : 100 x 10
Pieces / Case : 1000
Carton Size : 545 x 300 x 425 mm

Top Out (mm) 200 x 135
 Top In (mm) 191 x 126
 750 ml
 42 mm
 Bottom (mm) 158 x 88



Product : 900 ml
Curling : Half Curling
Packing : 100 x 10
Pieces / Case : 1000
Carton Size : 565 x 300 x 425 mm

Top Out (mm) 207 x 152
 Top In (mm) 195 x 140
 900 ml
 45 mm
 Bottom (mm) 167 x 107



Product : 3 CP
Curling : Half Curling
Packing : 100 x 10
Pieces / Case : 1000
Carton Size : 905 x 265 x 468 mm

Top Out (mm) 220 x 172
 Top In (mm) 212 x 164
 3 CP
 36 mm
 Bottom (mm) 192 x 140



Product : 7" Round
Curling : Half Curling
Packing : 100 x 6
Pieces / Case : 600
Carton Size : 580 x 380 x 360 mm

Top Out (mm) Dia 180
 Top In (mm) Dia 165
 7" Round
 45 mm
 Bottom (mm) Dia 140



Product : 9" Round
Curling : Half Curling
Packing : 100 x 6
Pieces / Case : 600
Carton Size : 710 x 475 x 320 mm

Top Out (mm) Dia 225
 Top In (mm) 210
 9" Round
 50 mm
 Bottom (mm) 190



Product : Muffin/Lava Cup (No 41)
Curling : Full Curling
Packing : 100 x 50
Pieces / Case : 5000
Carton Size : 460 x 460 x 505

Top Out (mm) Dia 90
 Top In (mm) Dia 78
 41
 40 mm
 Bottom (mm) 53



Product : 4191
Curling : Full Curling
Packing : 100 x 10
Pieces / Case : 1000
Carton Size : 440 x 270 x 420 mm

Top Out (mm) 203 x 78
 Top In (mm) 195 x 70
 4191
 45 mm
 Bottom (mm) 167 x 55

Aluminium Foil Container



Product : 9 x 9 x 1.5
Curling : Half Curling
Packing : 100 x 2
Pieces / Case : 200
Carton Size : 500 x 260 x 265 mm

Top Out (mm) 236 x 236
 Top In (mm) 225 x 225
9 x 9 x 1.5
 43 mm
 Bottom (mm) 200 x 200



Product : Alu Glass
Curling : Full Curling
Packing : 100 x 20
Pieces / Case : 2000
Carton Size : 435 x 370 x 510 mm

Top Out (mm) Dia 82
 Top In (mm) Dia 72
Alu Glass
 65
 Bottom (mm) Dia 52



Product : 510
Curling : Full Curling
Packing : 100 x 20
Pieces / Case : 2000
Carton Size : 640 x 495 x 400 mm

Top Out (mm) 188 x 118
 Top In (mm) 180 x 110
510
 29 mm
 Bottom (mm) 160 x 92



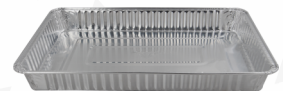
Product : 7356
Curling : Full Curling
Packing : 125 x 4
Pieces / Case : 500
Carton Size : 405 x 300 x 375 mm

Top Out (mm) 169 x 130
 Top In (mm) 162 x 123
7356
 30 mm
 Bottom (mm) 152 x 114



Product : 7382
Curling : Full Curling
Packing : 125 x 4
Pieces / Case : 500
Carton Size : 420 x 360 x 340 mm

Top Out (mm) 198 x 162
 Top In (mm) 183 x 150
7382
 28 mm
 Bottom (mm) 173 x 142



Product : 73121
Curling : Full Curling
Packing : 50 x 6
Pieces / Case : 300
Carton Size : 550 x 300 x 310 mm

Top Out (mm) 265 x 175
 Top In (mm) 256 x 166
73121
 31 mm
 Bottom (mm) 245 x 154



Product : 5330 Lacquered
Curling : Full Curling
Packing : 125 x 8
Pieces / Case : 1000
Carton Size : 456 x 335 x 300 mm

Top Out (mm) 158 x 103
 Top In (mm) 147 x 90
5330
 30 mm
 Bottom (mm) 140 x 85



Product : 5330 lid
Curling : NA
Packing : 125 x 8
Pieces / Case : 1000
Carton Size : 455 x 365 x 215 mm

Top Out (mm) 163 x 110
5330 Lid
 13 mm



Product : 882
Curling : Full Curling
Packing : 100 x 15
Pieces / Case : 1500
Carton Size : 300 x 250 x 250 mm

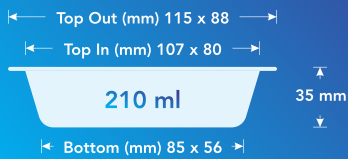
Top Out (mm) Dia 55
 Top In (mm) Dia 51
882
 35 mm
 Bottom (mm) Dia 38

Aluminium Foil Container



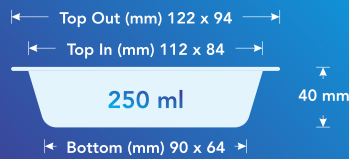
ECO

Product : 210 ml
 Curling : Half Curling
 Packing : 100 x 20
 Pieces / Case : 2000
 Carton Size : 525 x 450 x 265 mm



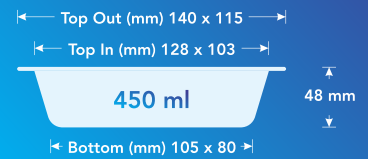
ECO

Product : 250 ml
 Curling : Half Curling
 Packing : 100 x 20
 Pieces / Case : 2000
 Carton Size : 525 x 450 x 265 mm



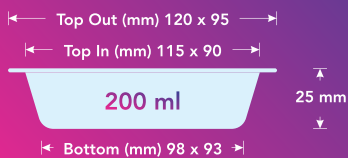
ECO

Product : 450 ml
 Curling : Half Curling
 Packing : 100 x 15
 Pieces / Case : 1500
 Carton Size : 620 x 265 x 455 mm



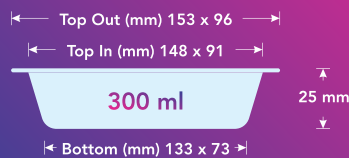
PREMIUM

Product : 200 ml
 Curling : Full Curling
 Packing : 100 x 40
 Pieces / Case : 4000
 Carton Size : 527 x 475 x 520 mm



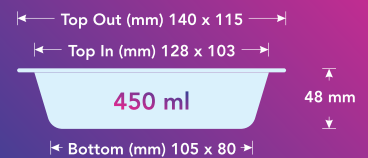
PREMIUM

Product : 300 ml
 Curling : Full Curling
 Packing : 100 x 20
 Pieces / Case : 2000
 Carton Size : 510 x 490 x 330 mm



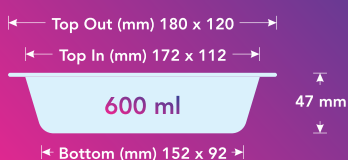
PREMIUM

Product : 450 ml
 Curling : Half Curling
 Packing : 100 x 15
 Pieces / Case : 1500
 Carton Size : 620 x 265 x 455 mm



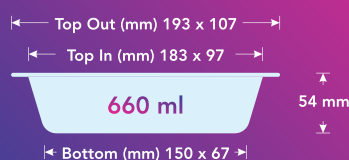
PREMIUM

Product : 600 ml
 Curling : Half Curling
 Packing : 100 x 10
 Pieces / Case : 1000
 Carton Size : 650 x 285 x 380 mm



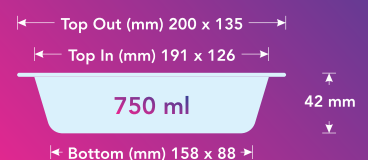
PREMIUM

Product : 660 ml
 Curling : Half Curling
 Packing : 100 x 10
 Pieces / Case : 1000
 Carton Size : 570 x 270 x 410 mm



PREMIUM

Product : 750 ml
 Curling : Half Curling
 Packing : 100 x 10
 Pieces / Case : 1000
 Carton Size : 565 x 300 x 425 mm



Aluminium Foil Container (Special Range)



Product : 1 LB Oblong/ Code 2
Curling : Half Curling
Packing : 100 X 10
Pieces / Case : 1000
Carton Size : 503x313x310 mm

Top Out (mm) 147x117
 Top In (mm) 143 x 113

455 ml

47 mm

Top Out (mm) 109 x 84



Product : Half Size Deep
Curling : Full Curling
Packing : 100 X 1
Pieces / Case : 100
Carton Size : 530x335x280 mm

Top Out (mm) 325x266
 Top In (mm) 316x257

3553 ml

64 mm

Top Out (mm) 261x201



Product : Half Size Lid
Curling : Full Curling
Packing : 100 X 1
Pieces / Case : 100
Carton Size : 298x175x358 mm

Top Out (mm) 336x277
 Top In (mm) 331x272

13 mm

Top Out (mm) 264x205



Product : Extra Deep
Curling : Full Curling
Packing : 100 X 1
Pieces / Case : 100
Carton Size : 545x335x335 mm

Top Out (mm) 525x326
 Top In (mm) 515x316

5400 ml

82 mm

Top Out (mm) 449x249



Product : 9 x 9 x 2
Curling : Half Curling
Packing : 100 X 2
Pieces / Case : 200
Carton Size : 430 X 240 X 470 mm

Top Out (mm) 242x242
 Top In (mm) 237x237

2230 ml

59 mm

Top Out (mm) 202x202



Product : Full Deep Lid
Curling : Full Curling
Packing : 50 X 2
Pieces / Case : 50
Carton Size : 368x155x568 mm

Top Out (mm) 543x344
 Top In (mm) 536x337

19 mm

Top Out (mm) 455x256



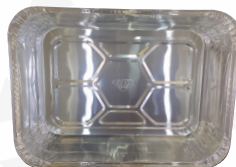
Product : Oval Roast
Curling : Full Curling
Packing : 50 X 1
Pieces / Case : 50
Carton Size : 580x350x465 mm

Top Out (mm) 430x315
 Top In (mm) 420x305

7130 ml

81 mm

Top Out (mm) 349x240



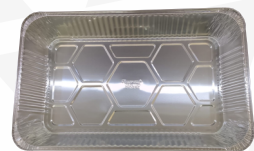
Product : Roaster Regular
Curling : Full Curling
Packing : 50 X 1
Pieces / Case : 50
Carton Size : 448x325x360 mm

Top Out (mm) 430x315
 Top In (mm) 420x305

7370 ml

81 mm

Top Out (mm) 349x240



Product : Full Deep
Curling : Full Curling
Packing : 50 X 1
Pieces / Case : 50
Carton Size : 538x343x360 mm

Top Out (mm) 525x326
 Top In (mm) 515x316

9900 ml

82 mm

Top Out (mm) 449x249

Aluminium Foil Container (Special Range)



Product : 7 inch
Curling : Half Curling
Packing : 125 X 2
Pieces / Case : 500
Carton Size : 398x398x255 mm

Top Out (mm) 185
Top In (mm) 182
670 ml
45 mm
Top Out (mm) 140



Product : 8 Inch
Curling : Half Curling
Packing : 125 X 4
Pieces / Case : 500
Carton Size : 463x463x255 mm

Top Out (mm) 218
Top In (mm) 211
1035 ml
46 mm
Top Out (mm) 178



Product : 9 inch
Curling : Half Curling
Packing : 125 X 4
Pieces / Case : 500
Carton Size : 488x488x280 mm

Top Out (mm) 232
Top In (mm) 228
1250ml
48.5 mm
Top Out (mm) 193



Product : 9 Inch Piepan
Curling : Full Curling
Packing : 125 X 2
Pieces / Case : 250
Carton Size : 470x235x220 mm

Top Out (mm) 226
Top In (mm) 222.6
475 ml
20 mm
Top Out (mm) 168



Product : 660 ml / 6A
Curling : Half Curling
Packing : 125 X 2
Pieces / Case : 500
Carton Size : 450X308X208 mm

Top Out (mm) 201x109
Top In (mm) 197x105
670 ml
57 mm
Top Out (mm) 161x70



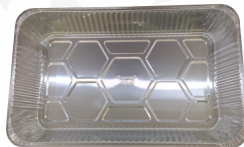
Product : Half Size Shallow
Curling : Full Curling
Packing : 100 X 1
Pieces / Case : 100
Carton Size : 485 X 330 X 268 mm

Top Out (mm) 325x266
Top In (mm) 316x257
2348 ml
40 mm
Top Out (mm) 261x201



Product : Half Medium Pan
Curling : Full Curling
Packing : 100 X 1
Pieces / Case : 100
Carton Size : 510x330x268 mm

Top Out (mm) 325x266
Top In (mm) 316x257
3045 ml
52 mm
Top Out (mm) 261x201



Product : Full Size Medium
Curling : Full Curling
Packing : 50 X 1
Pieces / Case : 50
Carton Size : 530x290x330 mm

Top Out (mm) 525x326
Top In (mm) 515x316
6740 ml
55 mm
Top Out (mm) 449x249



Product : Full Shallow Pan
Curling : Full Curling
Packing : 50 X 1
Pieces / Case : 50
Carton Size : 535x493x335

Top Out (mm) 525x326
Top In (mm) 515x316
4973 ml
41 mm
Top Out (mm) 449x249

Aluminium Household Foil



Aluminium Foil 6 meters

Inner Box Size	: 38 x 38 x 310 mm
Box / Cartons	: 100
Carton Size	: 400 x 400 x 340 mm



Aluminium Foil 9 meters

Inner Box Size	: 38 x 38 x 310 mm
Box / Cartons	: 100
Carton Size	: 400 x 400 x 340 mm



Aluminium Foil 18 meters

Inner Box Size	: 50 x 50 x 310 mm
Box / Cartons	: 100
Carton Size	: 525 x 520 x 340 mm



Aluminium Foil 25 meters

Inner Box Size	: 50 x 50 x 310 mm
Box / Cartons	: 100
Carton Size	: 525 x 520 x 340 mm



Aluminium Foil 72 meters

Inner Box Size	: 63 x 63 x 315 mm
Box / Cartons	: 25
Carton Size	: 340 x 340 x 340 mm



Aluminium Foil Net 1 kg

Inner Box Size	: 63 x 63 x 315 mm
Box / Cartons	: 25
Carton Size	: 340 x 340 x 340 mm



Aluminium Foil Supreme 72 Red

Inner Box Size	: 63 x 63 x 315 mm
Box / Cartons	: 25
Carton Size	: 340 x 340 x 340 mm



Aluminium Foil Supreme 75 Red

Inner Box Size	: 63 x 63 x 315 mm
Box / Cartons	: 25
Carton Size	: 340 x 340 x 340 mm

Aluminium Household Foil



Aluminium Foil Gross 1 kg
 Inner Box Size : 63 x 63 x 315 mm
 Box / Cartons : 25
 Carton Size : 340 x 340 x 340 mm



Aluminium Foil Blue 72 No Special
 Inner Box Size : 63 x 63 x 315 mm
 Box / Cartons : 25
 Carton Size : 340 x 340 x 340 mm



Aluminium Foil Blue 75 New
 Inner Box Size : 63 x 63 x 315 mm
 Box / Cartons : 25
 Carton Size : 340 x 340 x 340 mm



Aluminium Foil Blue 72 Special
 Inner Box Size : 63 x 63 x 315 mm
 Box / Cartons : 25
 Carton Size : 340 x 340 x 340 mm



Aluminium Foil Blue 1 kg Special
 Inner Box Size : 63 x 63 x 315 mm
 Box / Cartons : 25
 Carton Size : 340 x 340 x 340 mm



Aluminium Foil Blue 9 m (Purple)
 Inner Box Size : 38 x 38 x 310 mm
 Box / Cartons : 100
 Carton Size : 400 x 400 x 340 mm



Aluminium Foil Blue 72 m (Purple)
 Inner Box Size : 63 x 63 x 315 mm
 Box / Cartons : 25
 Carton Size : 340 x 340 x 340 mm



Aluminium Foil Blue 72 Special Guaranteed(NS)
 Inner Box Size : 63 x 63 x 315 mm
 Box / Cartons : 25
 Carton Size : 340 x 340 x 340 mm

Double diamond tissues are hygienic, robust, absorbent, and pleasant to the touch. Made entirely of natural fibres. They offer variety of tissue papers like napkins, toilet roll, facial tissue.



Napkins Size : 28 cm Napkin
 Material : 15 GSM / 1 Ply
 Type : Plain
 Packing : Carton
 Pieces per Packet : 50 / 80 / 90
 Packets per Carton : 160 / 112 / 100
 Carton Size : 630 x 520 x 585 mm

Napkins Size : 33 cm Napkin
 Material : 15 GSM / 2 Ply
 Type : Plain / Printed
 Packing : Carton
 Pieces per Packet : 50
 Packets per Carton : 90
 Carton Size : 530 x 530 x 500 mm

Napkins Size : 40 cm Napkin
 Material : 15 GSM / 2 Ply
 Type : Plain / Printed
 Packing : Carton
 Pieces per Packet : 50
 Packets per Carton : 60
 Carton Size : 620 x 410 x 510 mm



Napkins Size : Tissue Rolls (Single Pack)
 Material : 15 GSM / 2 Ply
 Size : 10 x 10 cm / 250 pulls
 Pieces per Packet : 1
 Packets per Carton : 150
 Carton Size : 580 x 480 x 530 mm

Napkins Size : Tissue Rolls (6 in 1)
 Material : 15 GSM / 2 Ply
 Size : 10 x 10 cm / 250 pulls
 Pieces per Packet : 6
 Packets per Carton : 25
 Carton Size : 580 x 480 x 530 mm

Napkins Size : Tissue Rolls (10 in 1)
 Material : 15 GSM / 2 Ply
 Size : 10 x 10 cm / 250 pulls
 Pieces per Packet : 10
 Packets per Carton : 15
 Carton Size : 580 x 480 x 530 mm

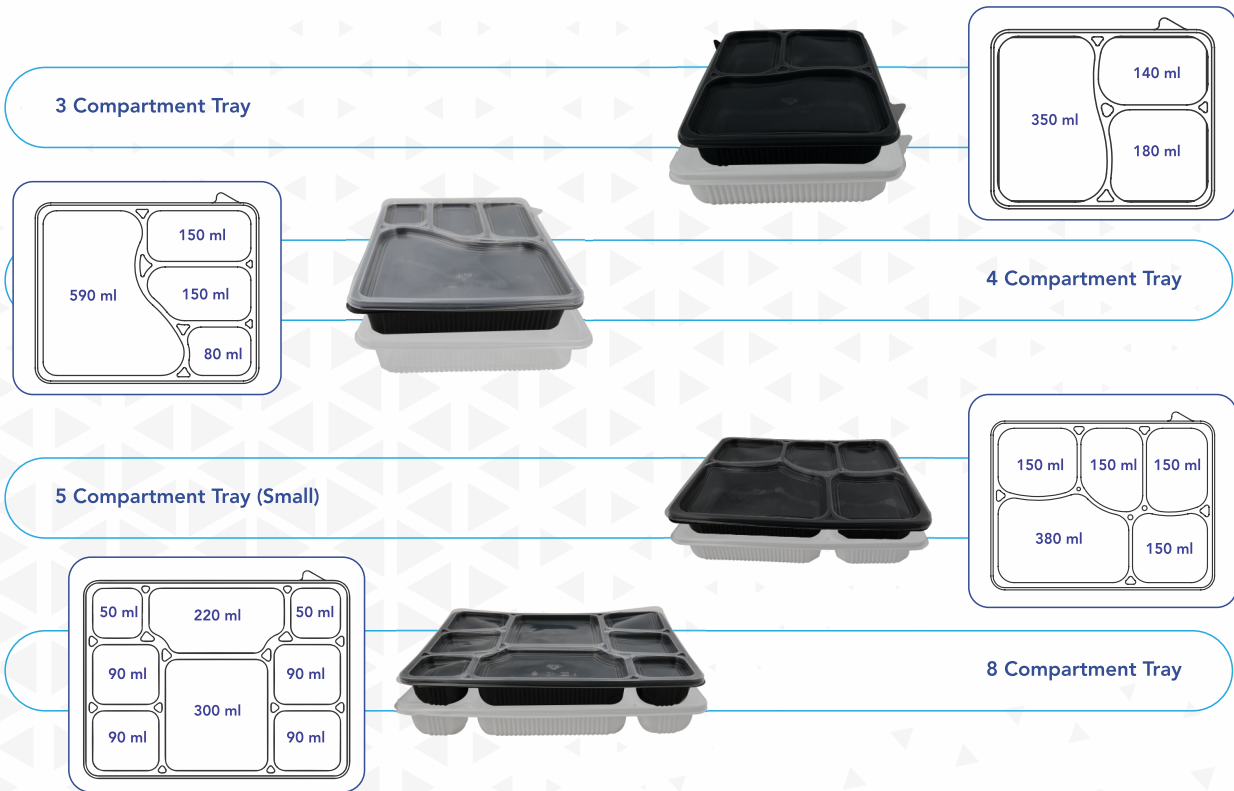


Product : Wet Tissue
 Material : Fragrance-Rose / Lavender / Lemo / Gardenia
 Pieces per Packet : 100
 Packets per Carton : 20
 Carton Size : 600 x 400 x 210 mm

Product : Coasters
 Material : 5 Ply / 7 Ply Paper
 Pieces per Packet : 50
 Packets per Carton : 100
 Carton Size : 470 x 375 x 210 mm

Product : Facial Tissue
 Size : 12.5 gsm 2ply
 Material : 19 X 20 Cm 100 Pulls
 Pieces per Packet : 100
 Packets per Carton : 60
 Carton Size : 600 X 460 X 305 mm

Plastic Meal Tray



Plastic Meal Tray	Tray Dimension	Colours	Pcs per Carton	Tray Carton Size	Lid Carton Size
3 Compartment Tray/Lid	205 x 165 x 37 mm	Black	300 / 800	555 x 440 x 365 mm	550 x 440 x 265 mm
4 Compartment Tray / Lid	242 x 193 x 43 mm		300 / 800	625 x 510 x 335 mm	625 x 510 x 255 mm
5 Compartment Tray / Lid (Small)	265 x 200 x 38 mm	White	300 / 800	660 x 570 x 330 mm	655 x 560 x 360 mm
8 Compartment Tray / Lid	290 x 215 x 35 mm		300 / 600	690 x 600 x 395 mm	690 x 600 x 365 mm

Plastic Hinge Box



Plastic Meal Tray	Lid Type	Container Dimensions	Packing / CTN	Carton Size
250 ML Container With Lid	Flat	130 x 115 x 32.5 mm	1000	590 x 500 x 550 mm
375 ML Container With Lid	Flat	261 x 116 x 49 mm	1000	540 x 590 x 610 mm
375 ML Container With Lid	Dome	261 x 116 x 49 mm	1000	605 x 545 x 610 mm
500 ML Container With Lid	Flat	130 x 117 x 63.5 mm	1000	590 x 525 x 550 mm
600 ML Container With Lid	Flat	178 x 131 x 43.5 mm	600	590 x 535 x 560 mm
750 ML Container With Lid	Flat	178 x 131 x 55 mm	600	590 x 535 x 560 mm
1000 ML Container With Lid	Flat	178 x 131 x 72 mm	600	630 x 535 x 560 mm
1250 ML Container With Lid	Flat	352 x 231 x 48.5 mm	400	725 x 485 x 470 mm
1250 ML Container With Lid	Dome	352 x 231 x 48.5 mm	400	735 x 485 x 510 mm
1500 ML Container With Lid	Flat	352 x 231 x 57.5 mm	400	720 x 590 480 mm
1500 ML Container With Lid	Dome	350 x 229 x 57.5 mm	400	725 x 485 x 470 mm
2000 ML Container With Lid	Flat	352 x 231 x 73.5 mm	400	640 x 720 x 490 mm
2000 ML Container With Lid	Dome	352 x 231 x 73.5 mm	400	735 x 585 x 490 mm
2250 ML Container With Lid	Flat	350 x 231 x 83.5 mm	400	725 x 635 x 490 mm
2250 ML Container With Lid	Dome	350 x 231 x 83.5 mm	400	715 x 735 x 490 mm

Paper Bag

Suvjay Industries India LLP offers wide range of paper bags for airlines, food service, catering, retail, wholesale companies. Sii offers paper bags with or without handle helping companies to go green & sustainable. our range includes square bottom, V bottom paper bags available type: brown kraft, bleach kraft, greaseproof paper bags, oven bags



Item	Length	Width	Gusset	Paper	Packing	Carton Size
Paper Bag - V Bottom	230 mm	95 mm	70 mm	Brown / White Kraft	24 x 1 kg = 24 kgs	485 x 305 x 405 mm
Paper Bag - V Bottom	300 mm	145 mm	80 mm	Brown / White Kraft	12 x 2 kgs = 24 kgs	455 x 320 x 385 mm
Paper Bag - V Bottom	345 mm	145 mm	80 mm	Brown / White Kraft	12 x 2 kgs = 24 kgs	455 x 365 x 345 mm
Paper Bag - V Bottom	365 mm	220 mm	90 mm	Brown / White Kraft	12 x 2 kgs = 24 kgs	466 x 385 x 360 mm
Paper Bag - V Bottom	400 mm	180 mm	65 mm	Brown / White Kraft	12 x 2 kgs = 24 kgs	420 x 380 x 390 mm
Paper Bag - V Bottom	460 mm	200 mm	100 mm	Brown / White Kraft	12 x 2 kgs = 24 kgs	615 x 480 x 235 mm
Paper Bag - V Bottom	485 mm	200 mm	100 mm	Brown / White Kraft	12 x 2 kgs = 24 kgs	615 x 505 x 200 mm
Paper Bag - Square Bottom (without Handle)	350 mm	240 mm	120 mm	Brown / White Kraft	1000 Pcs	495 x 370 x 345 mm
Paper Bag - Square Bottom (without Handle)	330 mm	180 mm	110 mm	Brown / White Kraft	2000 Pcs	690 x 385 x 300 mm
Paper Bag - Square Bottom (without Handle)	300 mm	155 mm	90 mm	Brown / White Kraft	2000 Pcs	620 x 335 x 295 mm
Paper Bag - Square Bottom (without Handle)	275 mm	145 mm	95 mm	Brown / White Kraft	3000 Pcs	580 x 455 x 310 mm
Paper Bag - Square Bottom (without Handle)	240 mm	125 mm	75 mm	Brown / White Kraft	4000 Pcs	530 x 500 x 305 mm
Paper Bag - Square Bottom (without Handle)	290 mm	180 mm	115 mm	Brown / White Kraft	2000 Pcs	600 x 380 x 305 mm
Paper Bag - Square Bottom (without Handle)	305 mm	215 mm	120 mm	Brown / White Kraft	1000 Pcs	450 x 320 x 305 mm
Paper Bag - Square Bottom (with Handle)	350 mm	240 mm	120 mm	Brown / White Kraft	500 pcs	495 x 370 x 345 mm
Paper Bag - Square Bottom (with Handle)	280 mm	280 mm	150 mm	Brown / White Kraft	500 pcs	590 x 370 x 385 mm
Paper Bag - Square Bottom (with Handle)	240 mm	240 mm	140 mm	Brown / White Kraft	500 pcs	495 x 260 x 385 mm
Paper Bag - Square Bottom (with Handle)	275 mm	195 mm	100 mm	Brown / White Kraft	500 pcs	405 x 295 x 345 mm

Paper Straw



Paper Straw	Size	Straw Weight	Packing	Carton Size
6 mm - Plain/Printed	6 mm Dia x 200 mm length	9 gms	10,000	630 x 510 x 650 mm
8 mm - Plain/Printed	8 mm Dia x 200 mm length	12 gms	5,000	630 x 510 x 650 mm
10 mm - Plain/Printed	10 mm Dia x 200 mm length	16 gms	5,000	630 x 510 x 650 mm
12 mm - Plain/Printed	12 mm Dia x 200 mm length	20 gms	5,000	630 x 510 x 650 mm

Double Diamond Cling Film Keeps Food Fresh, It Is Easy To Tear & Versatile Wrap



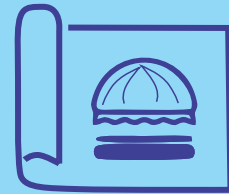
Keeps Food Fresh



Food Grade Material.



Excellent Stretch Ratio.



Excellent Transparency



Garbage Bag



Prevents leaks and Keeps your can clean With a reinforced bottom



Tackles the heaviest loads To prevent rips and tears



Tough odor control for Even the strongest trash Odors



Guard against leaks to Tap liquids in the bag



Food Sachets



Product	Details	Packing	Pieces	Carton Size
Sugar Sachets (White / Brown)	5.0 gms / as required	1 x 1000	1,000	405 x 285 x 153
Salt Sachets	1.0 gms / as required	1 x 2000	2,000	405 x 285 x 153
Pepper Sachets	0.2 gms / as required	1 x 2000	2,000	405 x 285 x 153

Wooden / Plastic Cutlery



Product	Details	Packing	Pieces	Carton Size
Wooden Spoon / Fork / Knife	14 cm / 16 cm	100 x 100	10,000	450 x 300 x 340 mm (14 cm) / 640 x 350 x 380 mm (16 cm)
Wooden Stirrer	14 cm	100 x 100	10,000	400 x 300 x 260 mm
Plastic Spoon / Fork / Knife	As Per Design	8 x 250	2,000	360 x 350 x 450 mm (Spoon / Fork) 440 x 350 x 280 mm (Knife)

Cutlery Packs



Product	Details	Packing	Pieces	Carton Size
3 in 1	as required	1 x 500	1,000	360 x 350 x 450 mm
5 in 1	as required	1 x 500	1,000	440 x 440 x 440 mm
7 in 1	as required	1 x 250	1,000	440 x 350 x 280 mm



PAPER CUTLERY

100% Compostable Cutlery

COMPOSTABLE | SUSTAINABLE
INNOVATIVE | EARTH FRIENDLY

SPOON, KNIFE, FORK AND ICE CREAM SPOON

SPECIFICATIONS:

Cutlery	Spoon	Fork	Knife	Tolerance
Weight (Grams)	3.2	3	2.9	+/- 10%
Length (mm)	157.5	158	159	+/- 1 mm
Thickness (mm)	1.05	1.12	1.02	+/- 5%

Standard Packing for individual cutleries:
50 Pcs/ Bag & 20 Bag/ Carton.

Customized paper pouch packing available with additional items (Napkins, portion sachets etc)

PAPER CUPS

100% Compostable

COMPOSTABLE | SUSTAINABLE
INNOVATIVE | EARTH FRIENDLY



SINGLE WALL | DOUBLE WALL | RIPPLE WALL | PLAIN | PRINTED

BIO PBS / PLA / AQUEOUS COATED - HOME & INDUSTRIAL COMPOSTABLE



GARBAGE BAGS

100% Compostable

COMPOSTABLE | SUSTAINABLE
INNOVATIVE | EARTH FRIENDLY

ISO17088, EN13432, ASTM6400, CERTIFIED RAW MATERIAL, HOME & INDUSTRIAL COMPOSTABLE.



Reduce Plastic Waste



Lightweight



Recyclable



Organic/Bio



Biodegradable



Eco-Friendly



Compostable



Food Wrapping Paper (Grease Proof)



PRODUCT FEATURES

Product Name	Mtrd.(m)	Thickness	Carton Size	Box /carton
Food Wrapping paper	9 + 2 Meter	40 Gsm	310 x 415 x 465 mm	72
Food Wrapping paper	20 + 5 Meter	40 Gsm	310 x 345 x 400 mm	42



The global way of wrapping, re-heating & even freezing your everyday meals. coze wrap is a multy - purpose food grade paper, ideal for wrapping, re-heating & freezing your everyday meals like parathas, rotis, burgers, sandwiches & more. it is microwave safe up-to 220°C

Pull And Wrap (Paper Cut Sheets)

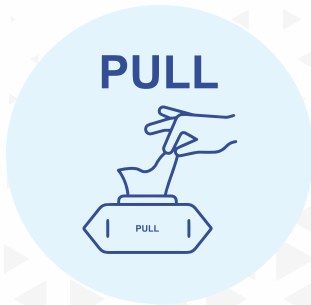
SWITCH TO HEALTHIER WRAPPING

SIZE SQUARE INCH

- 8 x 8 inch
- 9 x 9 inch
- 10 x 10 inch
- 11 x 11 inch
- 12 x 12 inch



Aluminium Foil (Pop Up Sheet)



Pull one sheet at a time



Wrap your food

- ★ Aluminum Foil: Pre-cut aluminum foil sheets are made from 100% aluminum
- ★ Embossed Foil: Foil sheets feature an embossed design
- ★ Pop-Up Dispenser Box: No cutting, folding, or tearing required
- ★ Multi-Use Foil Sheets: Safe for wrapping sandwiches, hot dogs, burgers, and baked potatoes
- ★ Foil sheets are great for hair color application and highlighting.



Aluminium Pop up Sheet (100) pcs.
 Size : 300 x 240 mm
 Inner Box Size : 320 x 26 x 135 mm
 Box / Cartons : 52
 Carton Size : 565 x 360 x 335 mm

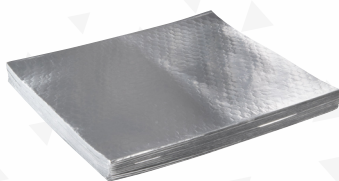


Product : Pop up Sheet Plain 25 Pcs.
 Size : 300 x 273 mm
 Inner Box Size : 310 x 145 x 30 mm
 Box / Cartons : 24
 Carton Size : 370 x 320 x 300 mm

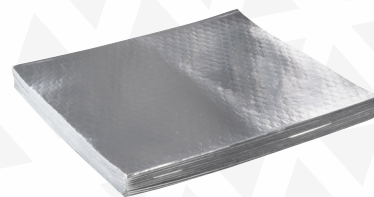


Pop Up Sheet Printed 250 pcs.
 Size : 180 x 240 mm
 Inner Box Size : 200 x 135 x 80 mm
 Box / Cartons : 12
 Carton Size : 415 x 590 x 255 mm

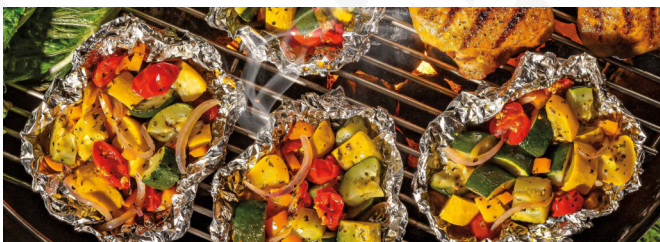
Pull & Wrap (Aluminum Foil)



Size- 180 x 240 mm

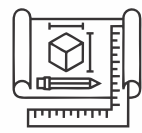
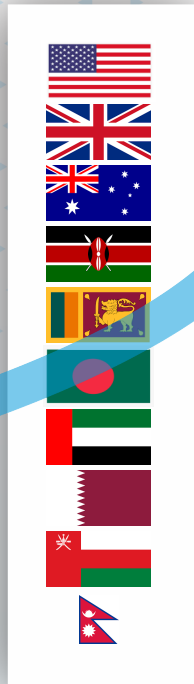


Size- 225 x 250 mm



..... Can be customized as for your requirement

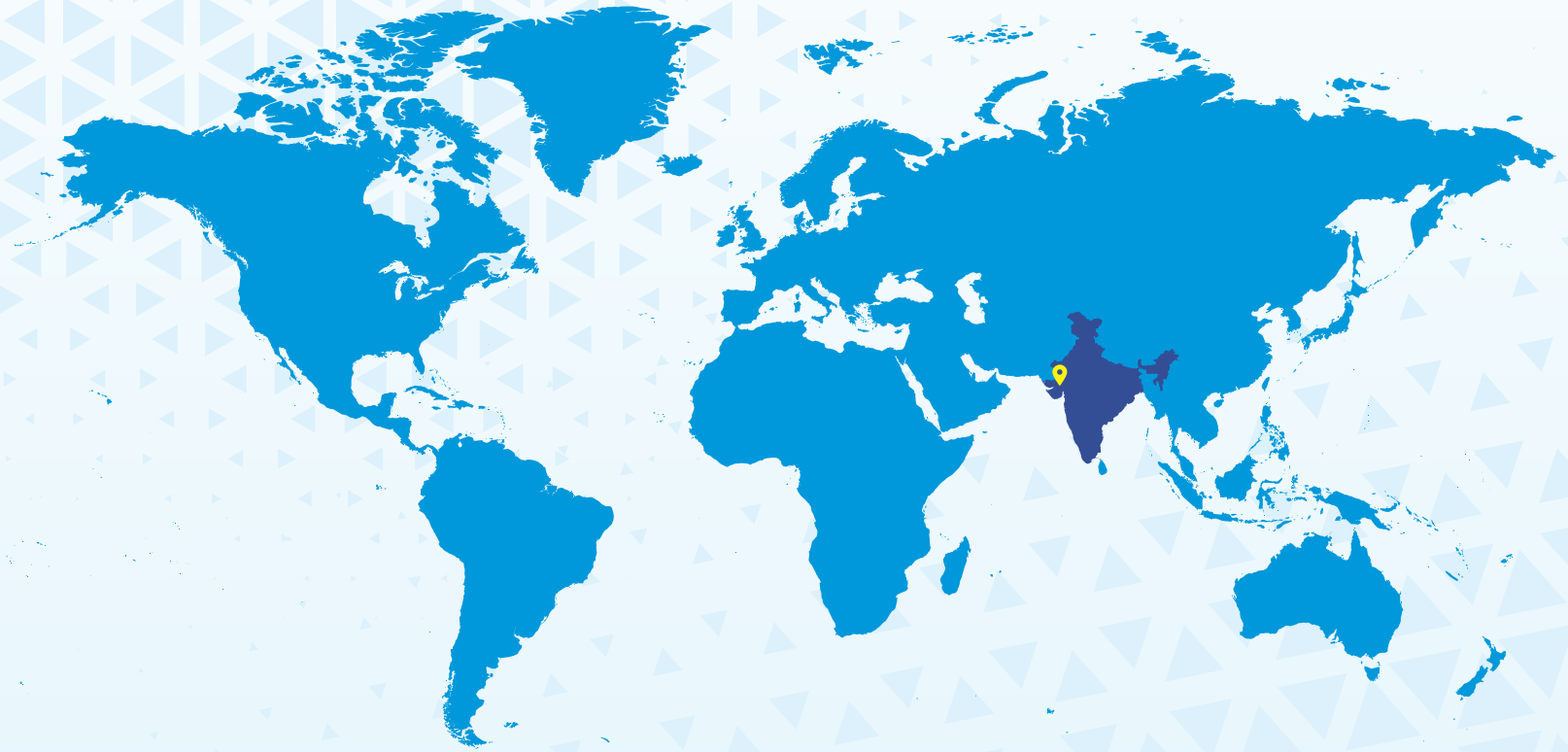
EXPORT COUNTRIES



INFRASTRUCTURE

World Class Production Facility of 230,000 sq. ft. constructed on 260,000 sq. ft. land.





Suvjay Industries India LLP

**PE-101 to PE-104, Opposite Reliable Ind.,
Phase-1, Sanand GIDC, Ahmedabad, Gujarat - 382110, India**

www.suvjay.com | connect@suvjay.com

Company Phone: +91 2717 6179000 | Customer Care: +91 97264 27161